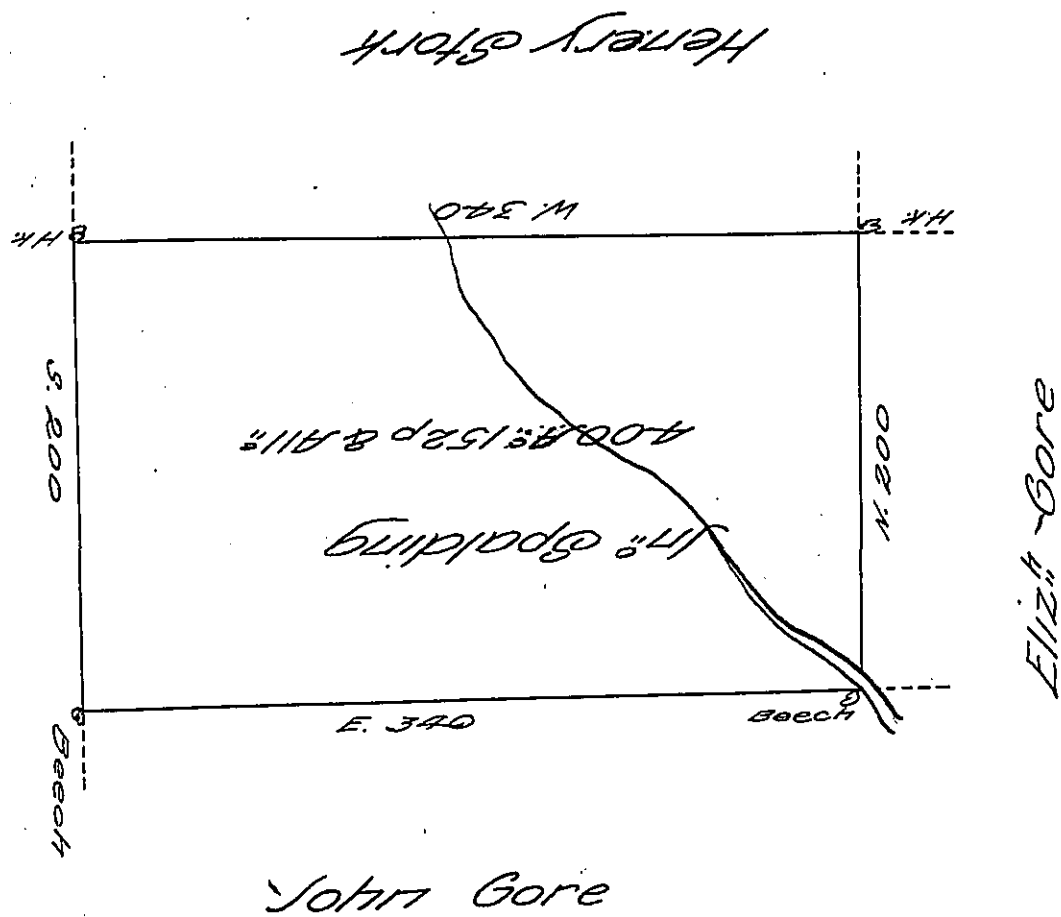


FORM NO. 1.



*By Virtue of a Warr^t dated 20th of Aug^r 1792
 Surveyed the 10th of August 1793 Unto John
 Spalding the above described Tract of Four
 Hundred acres & 152 perches of land and
 Allow^g. Situated on a westerly branch of
 Sugar Creek in the County of Luzerne*

By W^m Montgomery D. S.

Jo. S. Wallis D. S.

*To Daniel Brodhead Esq^r }
 Surv^r Gen^l of Pennsylv^a }*

39.

IN TESTIMONY that the above is a copy of the original remaining on file in the Department of Internal Affairs of Pennsylvania, made conformably to an Act of Assembly approved the 16th day of February 1833, I have hereunto set my hand and caused the Seal of said Department to be affixed at Harrisburg, this twenty-third day of January 1907

Leaac P. Brown
 Secretary of Internal Affairs.